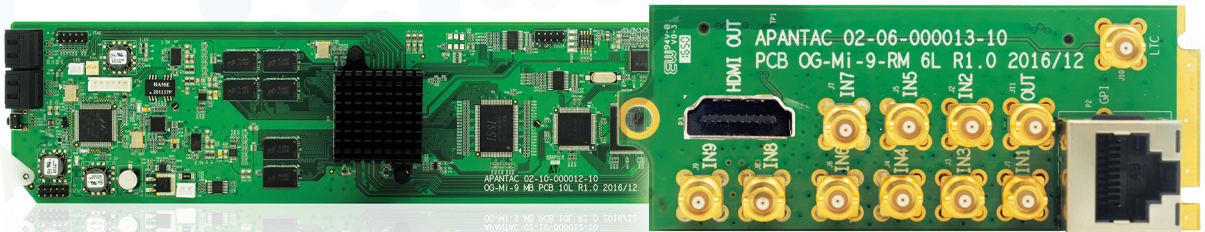


9 Input Multiviewer Card for openGear... expands to a 16 Input Multiviewer Card.

Perfectly suited for mobile production and rental & staging.

See us at: **NABSHOW**
Where Content Comes to Life
Booth: **N5906**



- ▶ 9 input Multiviewer card for openGear
- ▶ Expands to a 16 input Multiviewer
- ▶ Make it a standalone multiviewer with Apantac frame and power supply
- ▶ SDI Level A and B
- ▶ GPI, TSL Tally, native Utah router protocol
- ▶ Each input can be duplicated & resized
- ▶ Auto-detects 3G, HD, SD-SDI

3 models available:

OG-Mi-9

9 video inputs
1 SDI output

OG-Mi-9 +

9 video inputs
1 SDI & HDMI output

OG-Mi-9#

9 video inputs
2 independent outputs
Duplicates any source up to 9 times

Base price starting at just \$1,095



www.apantac.com

APANTAC